



powered by



WHERE? Barclaycard Arena - www.barclaycard-arena.de/en/

WHEN? October 28th & 29th 2017

WEBSITE www.esl-one.com/dota2/hamburg-2017/

OPENING HOURS

Saturday: 10:00 CEST

Sunday: 10:00 CET

VENUE ADDRESS

Barclaycard Arena

Sylvesterallee 10

22525 Hamburg

The arena closes after the end of the last match on each day.

Beware Daylight Saving Time ends between Saturday and Sunday

EVENT APP

All information in one place, get the event app now!

Available on iOS and Android: event.eslgaming.com/app/



PLEASE LEAVE YOUR BACKPACK AT THE HOTEL.
THE ARENA SECURITY DOESN'T ALLOW BIG BAGS INSIDE THE VENUE.



YOU CAN USE YOUR TICKET IN THE ENTIRE AREA OF HAMBURG TO GET TO AND FROM THE ARENA BY BUS/SUBWAY ON BOTH OCTOBER 28TH AND 29TH FOR FREE.

KEY INFORMATION

BY LOCAL PUBLIC TRANSPORTATION (HVV)

- With the S-Bahn

From the Hamburg Hauptbahnhof (S-Bahn), take the S3 direction Pinneberg or the S21 direction Elbgaustrasse until Stellingen – Arenen Station. From there you can easily take the free Shuttle bus-Service to the Barclaycard Arena.

- With the Metrobus

Line 22 (S-Blankenese - U-Kellinghusenstr.): Station: Hellgrundweg/Arenen;

Line 180 (S-Holstenstr. - S-Stellingen - Arenen), Station: Am Volkspark

BY TRAIN

From all the 3 major city train stations, you can easily catch an S-Bahn to bring you to the Barclaycard Arena.

- Hamburg Hauptbahnhof

S3 direction Pinneberg or S21 direction Elbgaustrasse , exit Stellingen – Arenen station

- Hamburg Dammtor

S21 direction Elbgaustrasse, exit Stellingen – Arenen station

- Hamburg Altona

S3 direction Pinneberg, exit Stellingen – Arenen station

DRIVING DIRECTIONS

- Coming From the South

Take the A7, exit at Hamburg- Volkspark and follow the signs to “Arena”/Barclaycard Arena. You can also use the HH-Bahrenfeld exit and follow the signs.

- Coming From the North

When on the A23, take the AK Hamburg-Northwest on the A7, direction south, and then exit at Hamburg-Stellingen. Then follow the signs to “Arena”. The same is true for anyone coming from the north.

- Coming From the East

Take the A24, direction Hamburg, until you reach a traffic circle. Take the second exit, direction center, on the Sievekingsallee. This will lead to Bürgerweide. When you reach a T intersection, turn right onto Wallstraße, this merges into Sechslingspforte Str. heading towards the Alster. Turn left on the Alster and cross over the first bridge, staying on the right side (Kennedy Bridge). Afterwards continue straight on the main street, keeping slightly to the left, direction TV tower. Drive approx. 5 km straight and then turn right onto the Schnackenburgallee. Follow the signs until you reach the arena.

- Coming from the West

From the A1, merge onto the Bucholzer intersection (Dreieck), then on the A261 drive until you reach the Autobahn intersection Hamburg Southwest. Here you can change onto the A7, direction north, until you reach the exit Hamburg-Volkspark. From there simply follow the signs to “Arena”/Barclaycard Arena. You can also take the exit HH-Bahrenfeld and follow the signs to the arena.

GETTING TO BARCLAYCARD ARENA





Arena Hostel Hamburg
Simple option with a communal kitchen

Volksbank Arena

O Shop

Barclaycard
Arena Hamburg

Arenen

HSV-Museum

Volksparkstadion

Sportanlage

LOCATION



Address
*Barclaycard Arena,
Sylvesterallee 10,
22525 Hamburg*



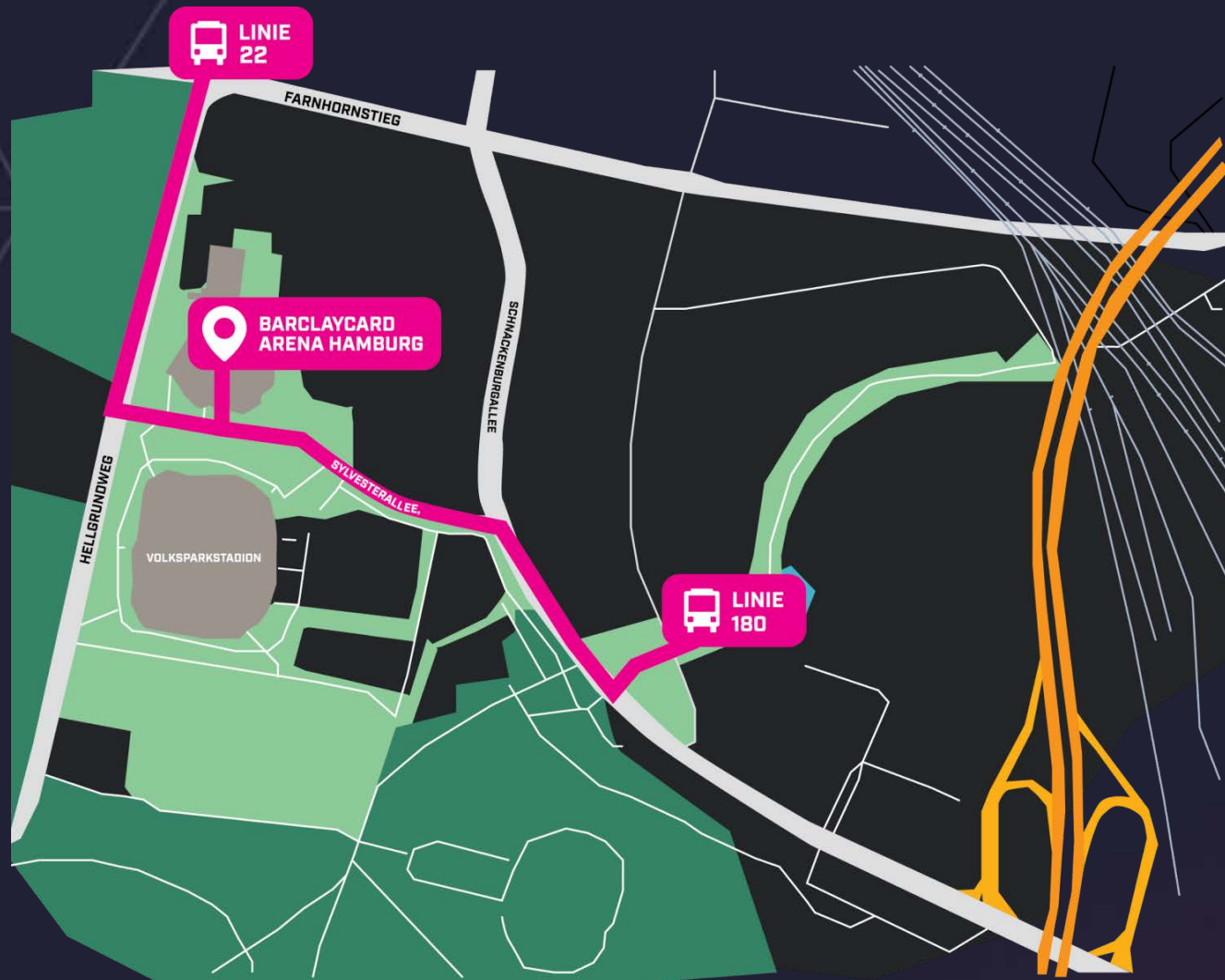


BY TRAIN

Upon arriving at “Hamburg Stellingen - Arenen” it takes about 20 minutes to reach Barclaycard Arena.

For an up-to-date timetable please visit <http://geofox.hvv.de>

BY TRAIN



BY BUS

Lines 22 and 180 stop next to Barclaycard Arena. Upon arriving at the stations it takes about 10-15 minutes to reach the arena.

For an up-to-date timetable please visit <http://geofox.hvv.de>

BY BUS



PARKING LOCATIONS

There are many parking spots just around Barclayscard Arena. The cost of parking is 7€ per vehicle.

Note: During all events, the Sylvesterallee Street is closed for regular traffic.

PARKING OPTIONS

ENTERING THE ARENA

Upon entering the arena, you will be asked to show your ticket. After validating your ticket you will be able to enter the arena. If you wish to leave the arena and re-enter on the same day, you need to scan your ticket once again at the exit to logout, which will allow you to re-enter the arena at the same day.

- Box office: Guest list
- E1 & E2: Day, Weekend & Plus Tickets
- E3: Premium Tickets

SAFETY

Safety information can be found on the Barclaycard Arena website right here: www.barclaycard-arena.de/en/safety

PREMIUM ENTRANCE

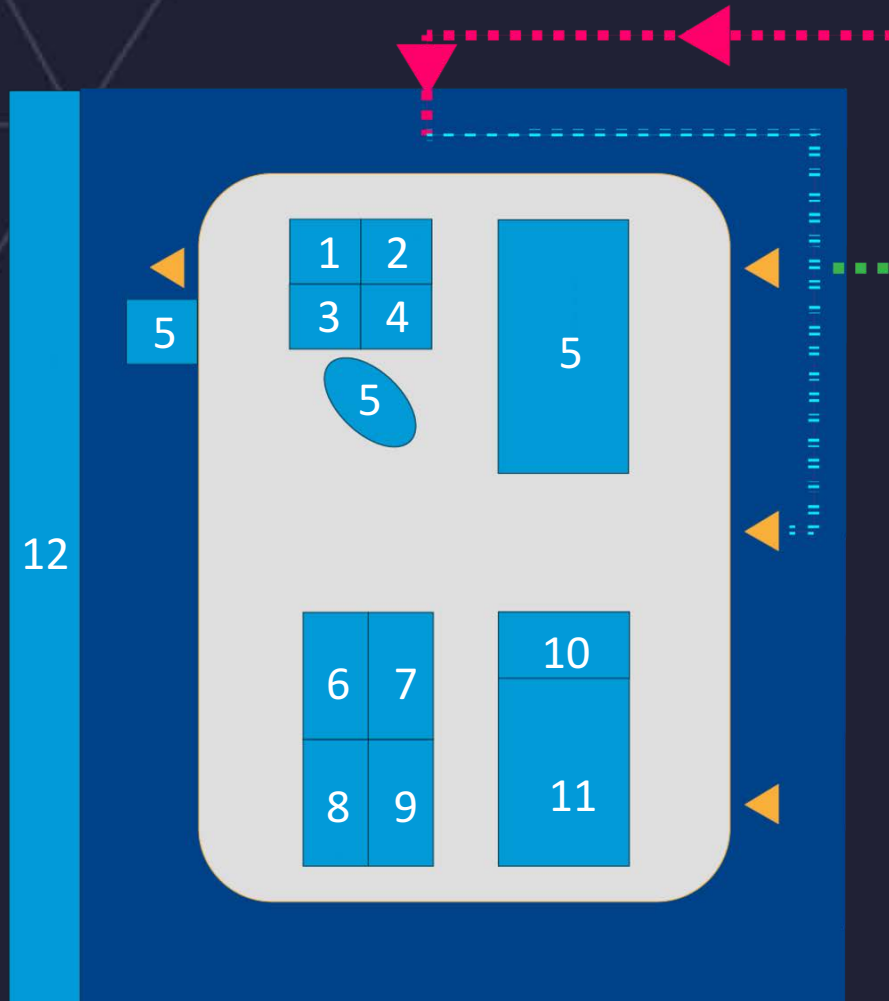
As a Premium your dedicated entry is at **E3**. To pickup your goodie bag please follow the signage. For Premium ticket holders the event badge which you'll receive at the goodie bag handout also counts as access ticket to the floor seating.

GOODIE BAGS

Premium goodie bags are available behind the **E3** entrance. **Plus** goodie bags are available behind the **E1** entrance.

At the entrance of each goodie bag handout area your event ticket will be scanned and you'll receive your event badge. To claim the goodie bag, present your badge at the stand and they will punch a hole in your badge to indicate that you picked up your goodie bag. Lost badges will not be replaced.

EISSPORTHALLE

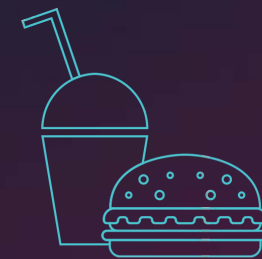
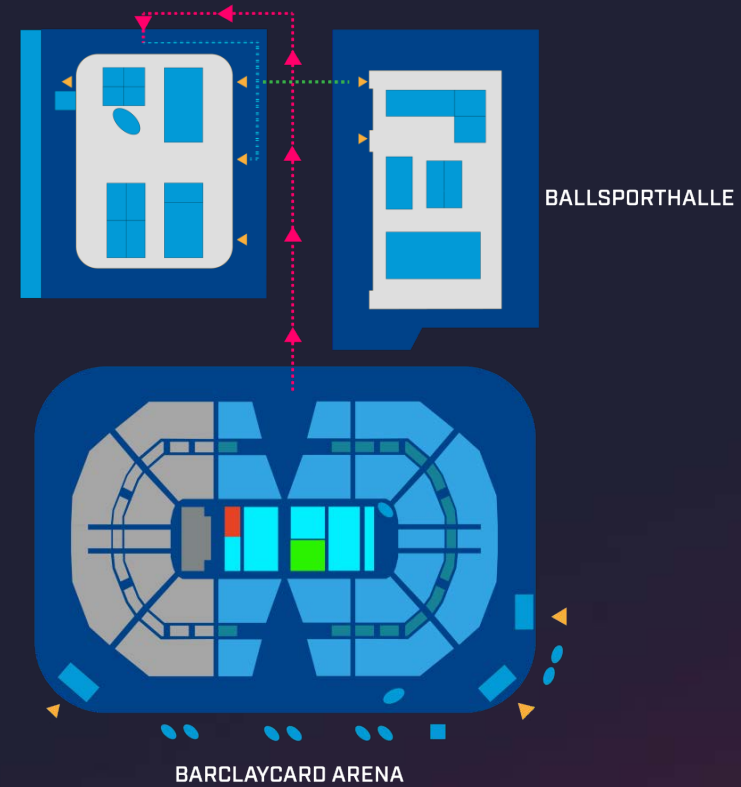


1. AIR BRUSH
2. PHOTO BOOTH
3. SONY
4. CORSAIR
5. MERCEDES
6. GLADIATOR
7. SECRET SHOP
8. BALLOON BATTLE
9. BULLRIDING
10. RED BULL
11. INTEL
12. MERCEDES TEST DRIVE



EISSPORTHALLE

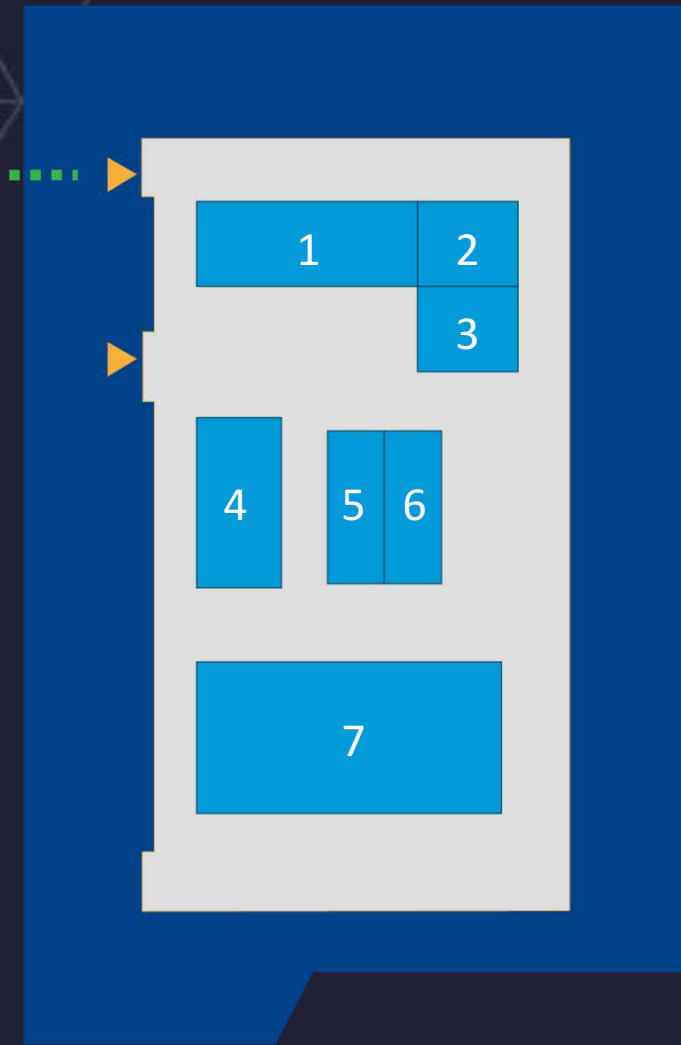
BALLSPORTHALLE



THERE ARE A VARIETY OF FOOD STANDS IN THE ARENA. ALTERNATIVELY, YOU CAN EAT OUTSIDE AND RE-ENTER. OUTSIDE FOOD IS NOT ALLOWED IN THE VENUE.

VENUE MAP

BALLSPORTHALLE



1. ZOTAC/IIYAMA/STEELSERIES
2. CREATIVE ZONE/FANWALL
3. HYPERX
4. WÜSTENROT
5. PRINGLES
6. SIGNING SESSION
7. OCULUS

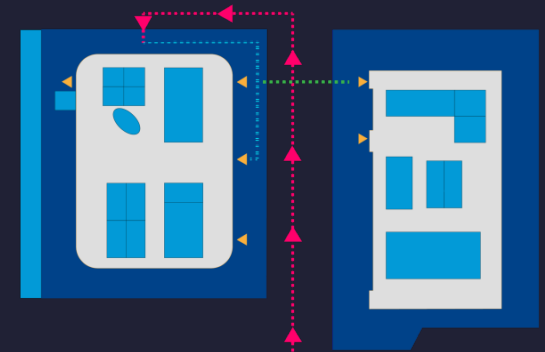


HALL
ENTRANCE

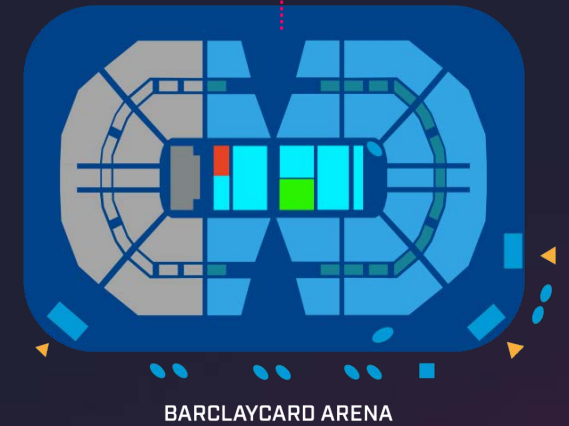


PARTNER
BOOTH

EISSPORTHALLE



BALLSPORTHALLE



BARCLAYCARD ARENA



A VARIETY OF SIDE ACTIVITIES LIKE SIGNING SESSIONS, AIRBRUSH TATTOOS, BULL RIDING, BALLOON RACES AND MORE ARE HAPPENING AT THE EVENT.

VENUE MAP

SIGNING SESSIONS

Signing sessions will take place in the venue on both Saturday and Sunday. Certain signing session will be for premium ticket holders only, this will be made clear with the tag “Premium Signing Session”.

Signing Sessions are happening in the Ballsporthalle at the Signing Session booth which is marked as number 6 on the respective overview map.

The schedule for signing sessions will be posted on the website and at the signing session booth.

ESL SHOP

The ESL Shop will have a wide selection of ESL and team apparel for all your favorite teams! Check out our online catalogue (shop.eslgaming.com) to find out what items you might find. Limited selection and sizes will be available at the ESL Shop at the event so make sure to shop first!



A MOBILE TEAM OF HELPERS WILL BE AT THE EVENT TO ANSWER ALL OF YOUR QUESTIONS AND PROVIDE YOU WITH USEFUL INFORMATION.

SIDE ACTIVITIES AND PARTNER BOOTHS

There are lots of things to do at ESL One Hamburg besides watch top level Dota2:

- Get your favourite player’s autograph! Join one of the many signing sessions and secure a signature from one of the players at the event!
- Support your favourite team! Grab yourself a temporary tattoo of your favourite team at our Airbrush Tattooists!
- Sign our fan wall.
- Take a picture with your friends at our photo booth.

INFORMATION



TEAM LIQUID



NEWBEE



EVIL GENIUSES



SG E-SPORTS



FNATIC



KEEN GAMING

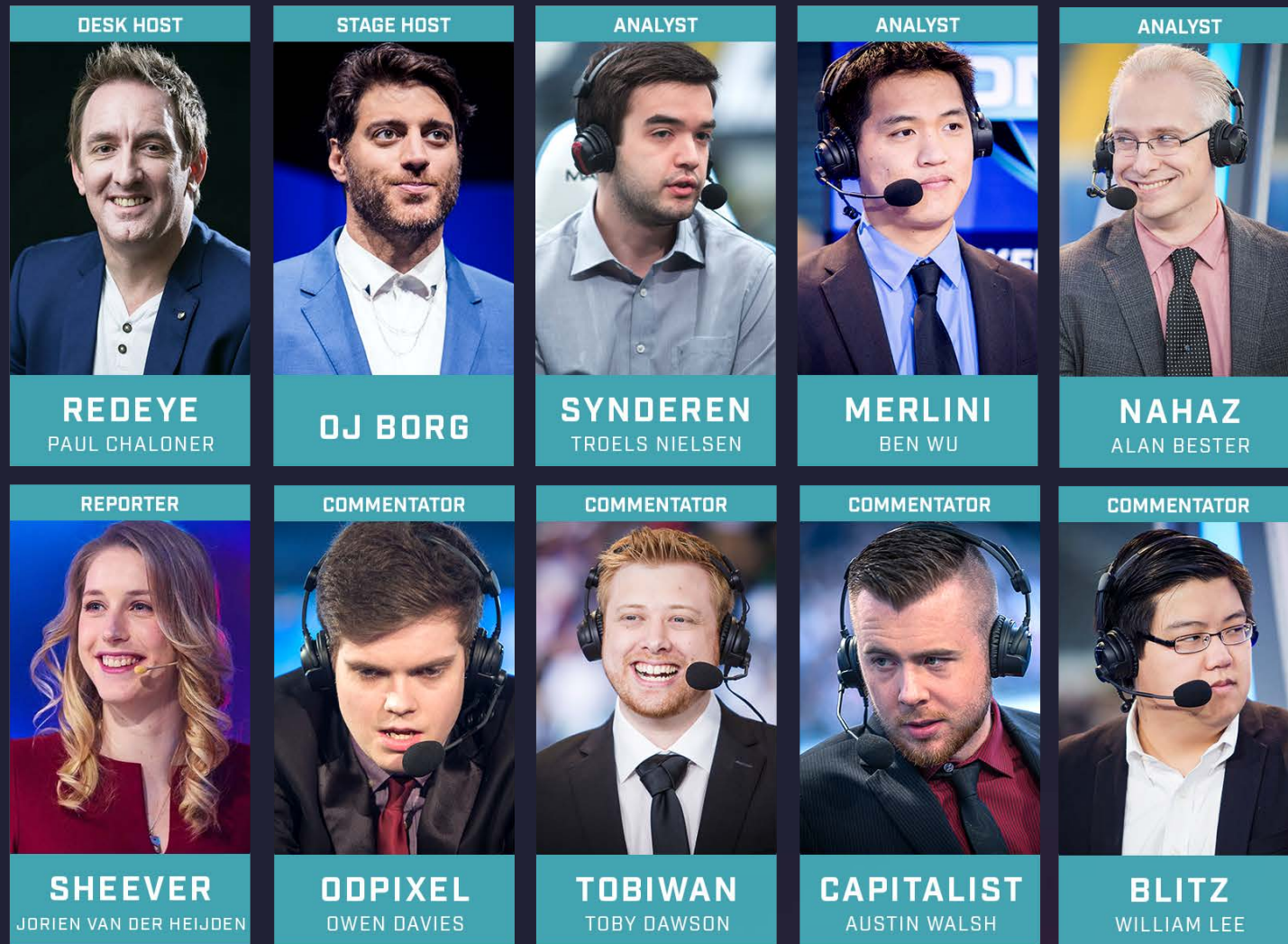


TEAM SECRET



VIRTUS.PRO

THE TEAMS



OBSERVERS: JONATHAN "PIMPMUCKL" LIEBIG | ALEKSANDAR "BUKKA" BUKURECKI

STATISTICS: BENJAMIN "NOXVILLE" STEENHUISEN

YOUR STORYTELLERS

SATURDAY, OCTOBER 28

10:00

DOORS OPEN

11:30

PRE-SHOW

12:00

GROUP B ELIMINATION MATCH | B03

~15:45

GROUP A DECIDER MATCH | B03

19:10

COSPLAY WINNER CEREMONY

~19:40

GROUP B DECIDER MATCH | B03

SUNDAY, OCTOBER 29

10:00

DOORS OPEN

11:30

PRE-SHOW

12:00

SEMI-FINAL #1 | B03

~15:30

SEMI-FINAL #2 | B03

19:30

GRAND FINAL | B03

~22:45

WINNER CEREMONY

MAIN EVENT SCHEDULE



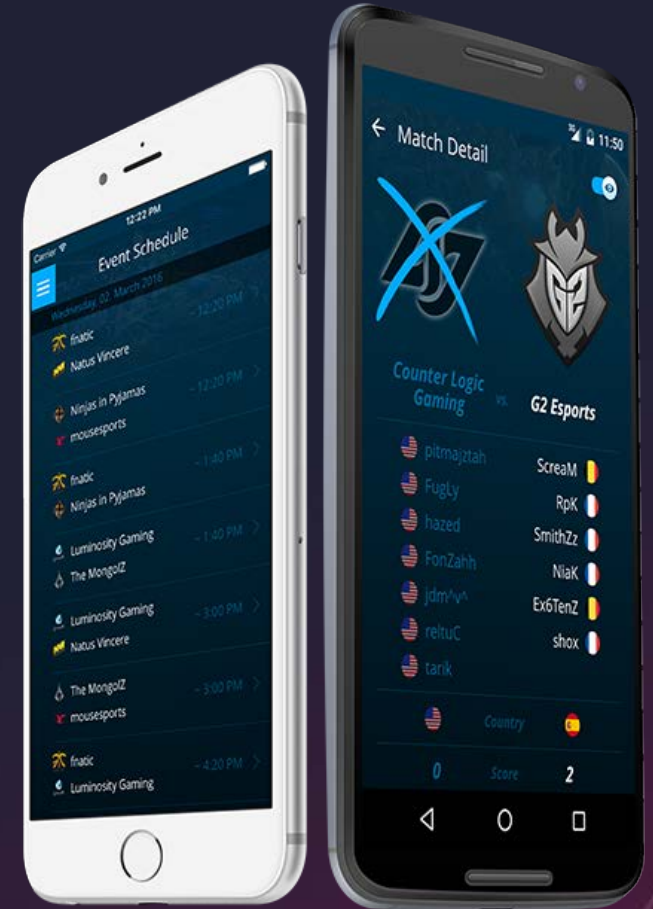
Your companion for all major ESL events.

This is the official App to keep up with all the exciting ESL eSports action! The strongest teams and best players from all over the world will head to ESL tournaments to battle it out against one another.

Keep up to date with all the action with the official ESL Event App!
Available on iOS and Android: event.eslgaming.com/app/

ESL ONE HAMBURG 2017 FEATURES

- Results and brackets with spoiler option
- Schedule of all matches
- Team and player info



EVENT APP



Enjoy the show!

If you have any further questions, feel free to reach me at kai@eslone.com

EVENT APP

